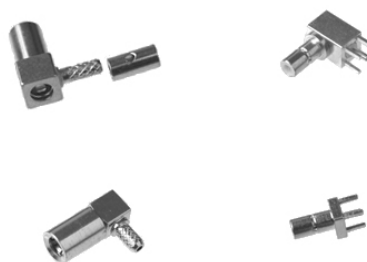


SSMB Series

SSMB 系列同轴器是按照 IEC169-19 研制生产的一种微型推入式射频同轴连接器，具有体积小、重量轻、使用方便、抗振性好等特点，适用于微小型无线电仪器及通信设备中连接射频同轴电缆。

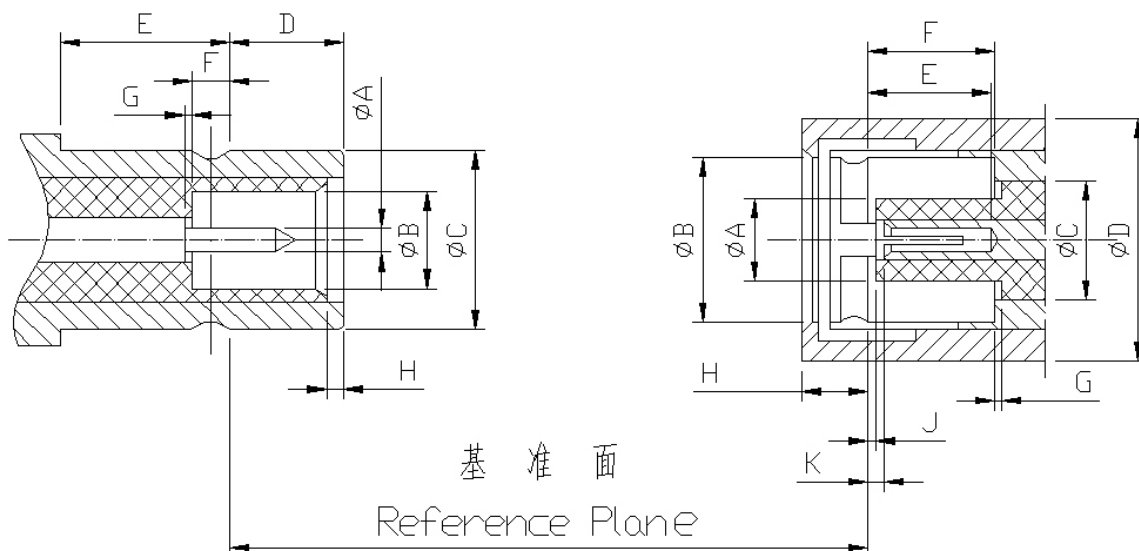
The SSMB series are snap-on coupling micro-miniature coaxial connectors which are produced according to the specifications of IEC169-19. They have the characteristics of light weight, small size, easy to connect and disconnect, vibration -proof and high reliability, are suitable for connecting RF coaxial cables in micro-electronic equipments and instruments.



金润信电子科技有限公司

主要技术特性 Technical Characteristics:		
环境温度范围 Temperature range	-55~+155°C	
电气性能 Electrical Characteristics		
特征阻抗 Characteristic impedance	50Ω; 75Ω	
工作电压 Working voltage	250V max(有效值)	
频率范围 Frequency range	0~3GHz(50Ω); 0~2GHz(75Ω)	
介质耐压 Dielectric withstanding voltage	海平面 at sea level: 750V(volts RMS)	
接触电阻 Contact resistance	内导体 center contact	≤6.0mΩ
	外导体 Outer contact	≤2.0mΩ
绝缘电阻 Insulation resistance	≥1000MΩ	
电压驻波比 VSWR	直式 straight	≤1.22 (0~1GHz)
		≤1.35 (0~3GHz)
	弯式 right - angle	≤1.50 (0~1GHz)
		≤1.63 (0~3GHz)
材料与涂覆 Mechanical Characteristics		
壳体和其它金属零件 Body or other metallic parts	黄铜镀金 Brass, gold plated	
插针 Male center contacts:	黄铜镀金 Brass, gold plated	
插孔 Female center contacts:	铍青铜镀金 Beryllium copper, gold plated	
绝缘体 Insulators:	聚四氟乙烯 PTFE	
压接套 Crimp ferrules:	铜合金镀镍或镀金 Copper alloy, nickel or gold plated	
密封件 Sealing washer	硅橡胶 Silicone rubber	
连接器机械耐久性 Connector durability	500 次 Cycles	

界面尺寸 Interface Mating Dimensions



	PLUG (mm)	
	MIN	MAX
A	0.35	0.38
B	1.37	-
C	-	2.69
D	-	2.77
E	2.3	-
F	0.56	-
G	-	0.13
H	0	-

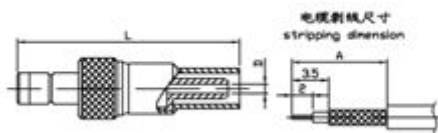
	JACK (mm)	
	MIN	MAX
A	-	1.35
B	2.74	-
C	2.11	-
D	4.5	-
E	2.46	-
F	2.74	-
G	-	0.13
H	-	2.26
J	0.53	-
K	0.53	0.89

SSMB Series

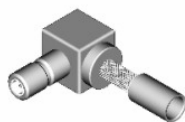
电缆连接器 Connectors for Cables



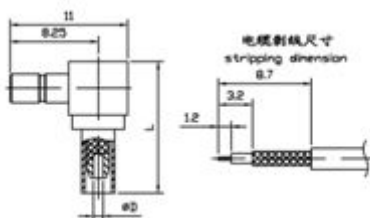
SSMB-J2



产品型号	电缆型号	L	D	A
SSMB-J2	SFF-50-1	21	00.9	9.0
SSMB-J3	SFF-50-1.5-1 RG316/U	24	01.6	10.0



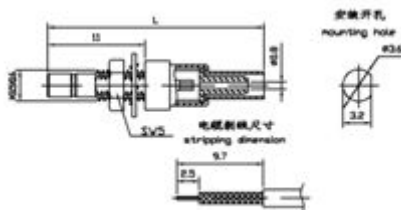
SSMB-JW2



产品型号	电缆型号	A	D	L
SSMB-JW2	SFF-50-1 RG178/U	8.7	00.9	12.3
SSMB-JW3	SFF-50-1.5-1 RG316/U	9.7	01.6	14.3



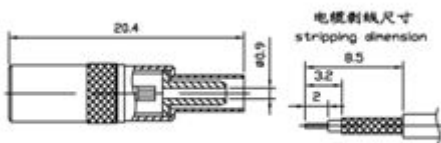
SSMB-JY2



产品型号	电缆型号	L	D
SSMB-JY2	SFF-50-1 RG178/U	24.4	00.9
SSMB-JY3	SFF-50-1.5-1 RG316/U	28.0	01.6



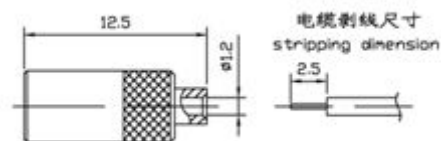
SSMB-K2



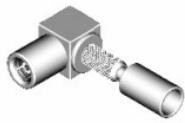
产品型号	电缆型号	备注
SSMB-K2	SFF-50-1 RG178/U	



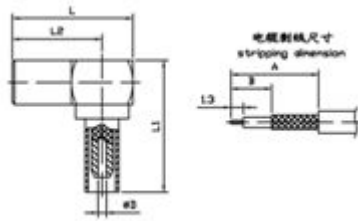
SSMB-KB1



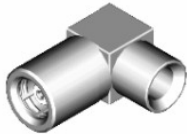
产品型号	电缆型号	备注
SSMB-KB1	0.047' Semi-rigid Cable 0.0047' 半刚电缆	



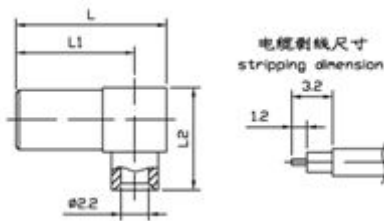
SSMB-KW2



产品型号	电缆型号	D	L	L1	L2	A	B
SSMB-KW2	SFF-50-1 RG178/U	Ø0.9	12.3	14	9.55	9.3	4.3
SSMB-KW2-1			11.4	13	9.3	8.5	2.0
SSMB-KW3	SFF-50-1.5-1 RG316/U	Ø1.6	12.3	14.1	9.55	10.3	4.1
SSMB-KW3-1			11.4	13	9.3	9.3	3.1

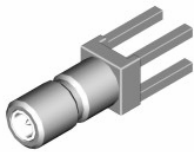


SSMB-KWB2

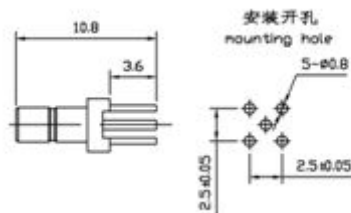


产品型号	电缆型号	L	L1	L2
SSMB-KWB2	SFT-50-2-1 RG405/U	11.8	9.3	8
SSMB-KWB2A		12.3	9.55	10.3

印制板安装连接器
Connectors for PC Board Mounting



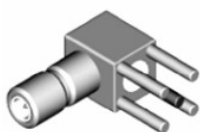
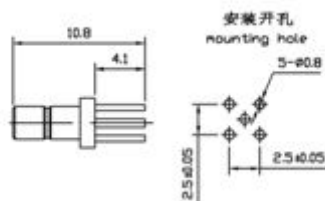
SSMB-JHD



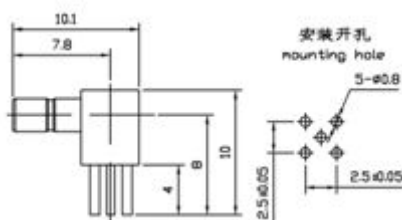
产品型号	L	备注
SSMB-JHD	10.8	
SSMB-JHD2	13.7	



SSMB-JHD1

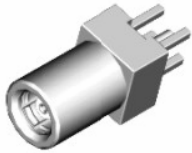
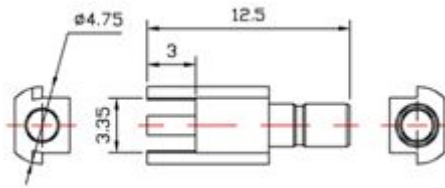


SSMB-JWHD

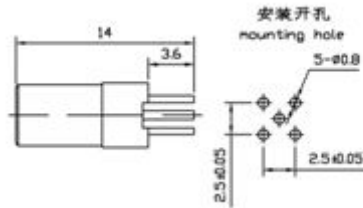




SSMB-JH-PCB



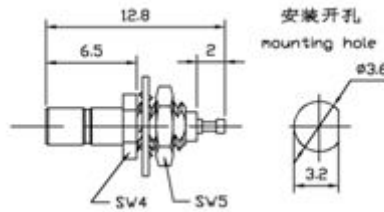
SSMB-KHD



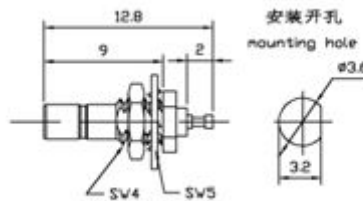
穿孔安装式终端连接器
Perforations Connectors with Solder End



SSMB-JY-1



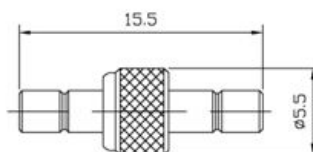
SSMB-JYA



系列内转接器
Within-Series Adapters



SSMB-JJ



金润信电子科技有限公司