

## SAA (CC4、DIN1.0/2.3) Series

SAA (CC4、DIN 1.0/2.3) 系列产品是按照 DIN41626 的要求生产的小型推入式连接的同轴连接器，具有尺寸小、机电性能稳定的特点，在射频通信设备中用于印制板高低频混装连接器的高频回路中连接射频电缆。

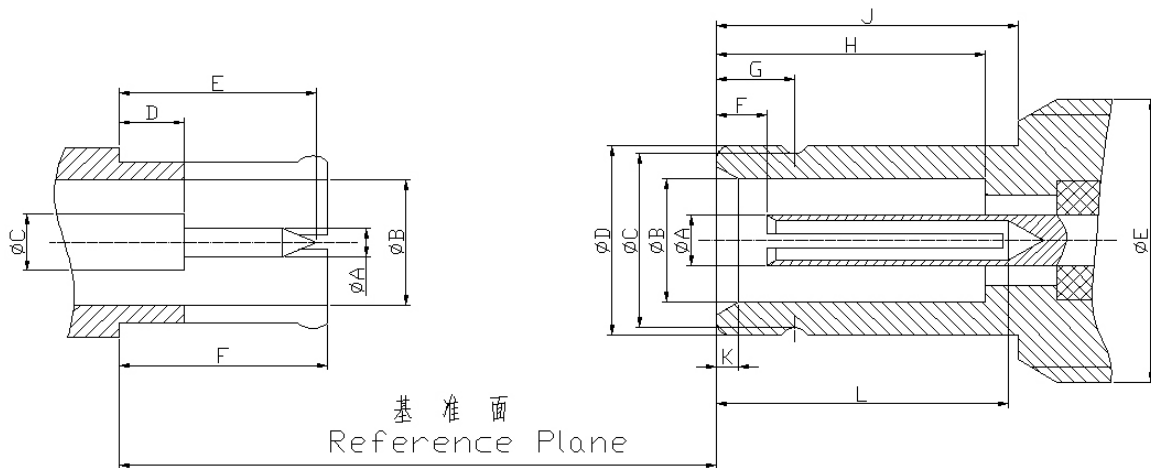
The SAA (DIN 1.0/2.3) series are snap-on coupling micro miniature coaxial connectors, which are developed and manufactured according to the specifications of DIN 41626. They have the characteristics of small sizes and steady capabilities of machine and electricity, are widely used to meet the requirements of denser and smaller space in the telecommunication systems and high speed digital equipments.



# 金润信电子科技有限公司

主要技术特性 Technical Characteristics:		
环境温度范围 Temperature range	-55~+125°C	
<b>电气性能 Electrical Characteristics</b>		
特征阻抗 Characteristic impedance	50Ω, 75Ω	
工作电压 Working voltage	250V max(有效值)	
频率范围 Frequency range	0~2GHz(50Ω); 0~1.5GHz(75Ω)	
介质耐压 Dielectric withstanding voltage	海平面 at sea level: 750V(volts RMS)	
接触电阻 Contact resistance	内导体 center contact	≤10.0mΩ
	外导体 Outer contact	≤5.0mΩ
绝缘电阻 Insulation resistance	≥1000MΩ	
电压驻波比 VSWR	直式 straight	≤1.25
	弯式 right - angle	≤1.4
<b>材料与涂覆 Mechanical Characteristics</b>		
壳体和其它金属零件 Body or other metallic parts	黄铜镀金 Brass, gold plated	
插针 Male center contacts:	黄铜镀金 Brass, gold plated	
插孔 Female center contacts:	铍青铜镀金 Beryllium copper, gold plated	
绝缘体 Insulators:	聚四氟乙烯 PTFE	
压接套 Crimp ferrules:	铜合金镀镍或镀金 Copper alloy, nickel or gold plated	
密封件 Sealing washer	硅橡胶 Silicone rubber	
连接器机械耐久性 Connector durability	500 次 Cycles	

### 界面尺寸 Interface Mating Dimensions



	PLUG (mm)	
	MIN	MAX
A	0.48	0.52
B	2.3	2.35
C	1	-
D	-	1.15
E	-	5.5
F	5.4	5.7

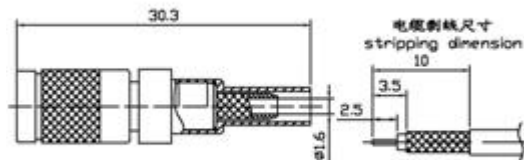
	JACK (mm)	
	MIN	MAX
A	-	1
B	3	-
C	-	3.6
D	-	4.1
E	-	M5.5×0.5
F	1.15	1.75
G	1.8	1.9
H	5.8	5.9
J	6.4	6.5
K	0.5	0.6
L	-	4.5

## SAA (DIN 1.0/2.3 or CC4) Series

### 电 缆 连 接 器 Connectors for Cables



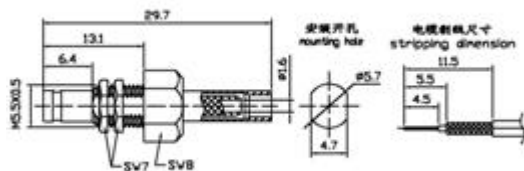
SAA-J2.5C



产品型号	电缆型号	备 注
SAA-J2.5C	SFF-50-1.5-1 RG316/U	



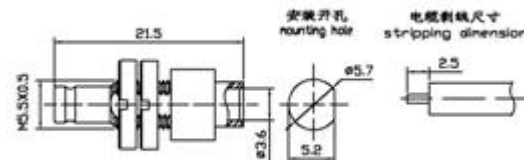
SAA-KY3



产品型号	电缆型号	备 注
SAA-KY3	SFF-50-1.5-1 RG316/U	



SAA-KYB3

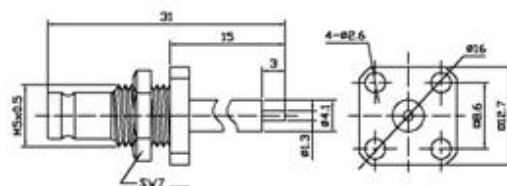


产品型号	电缆型号	备 注
SAA-KYB3	SFT-50-3-1 RG402/U	

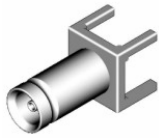
### 法 兰 安 装 式 终 端 连 接 器 Flange Connectors with Solder End



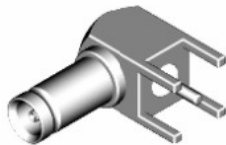
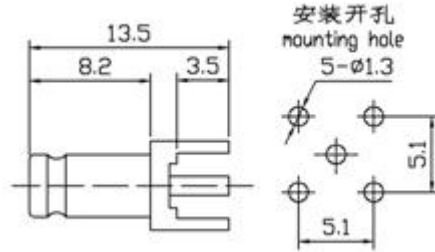
SAA-KFD



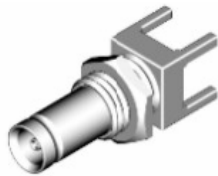
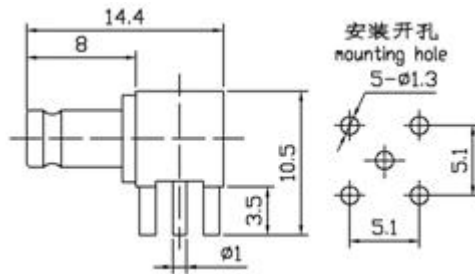
印制板安装连接器  
Connectors for PC Board Mounting



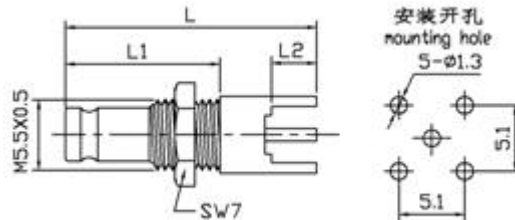
SAA-KHD



SAA-KWHD



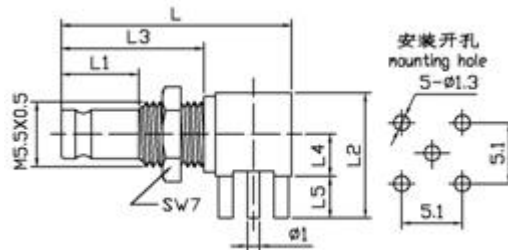
SAA-KYHD



产品型号	L	L1	L2
SAA-KYHD	19.5	12	3.5
SAA-KYHD1	18	11	5



SAA-KWYHD1



产品型号	L	L1	L2	L3	L4	L5
SAA-KYWHD1	24.7	14	10.5	17.3	3.5	3.5
SAA-KYWHD3	27.4	11	12.1	20.0	4.7	3.9
SAA-KYWHD4	37.8	11	22.1	30.4	14.7	3.9