

## MMCX Series

MMCX 系列是按照 CECC22340 要求生产的比 MCX 更小的微型同轴连接器，体积小、重量轻、连接可靠，有一定的抗振性，广泛用于小型通讯设备及个人通信设备中连接器射频同轴电缆。

The MMCX series are snap-on coupling micro-miniature coaxial connectors which are developed as smaller version of MCX connectors according to the specifications of CECC 22340. They have the characteristics of light weight, small size, vibration-proof and reliable contact, are widely used to connect with RF coaxial cables in the smallest of instruments as well as personal communication equipments.



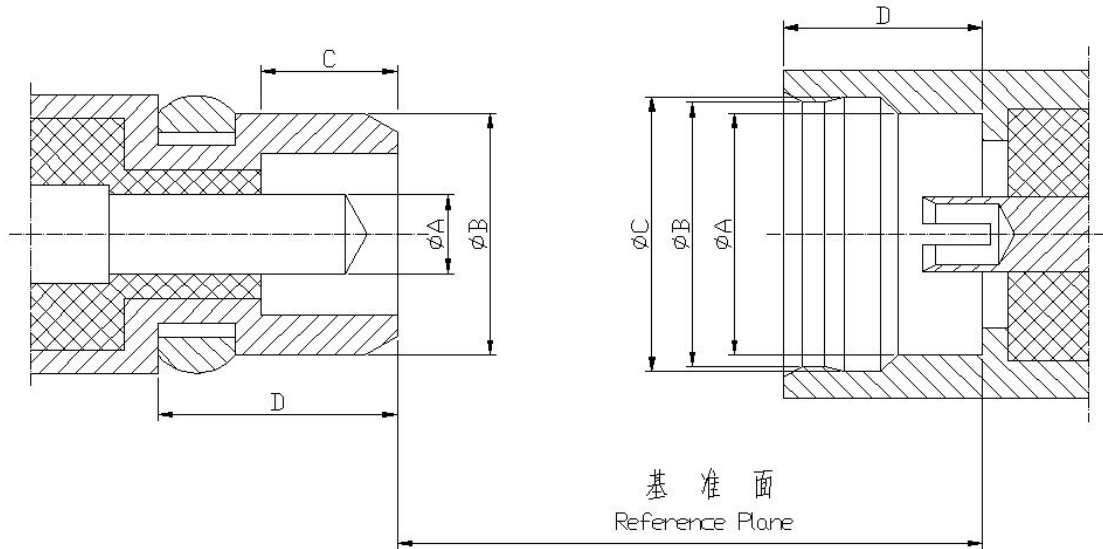
# 金润信电子科技有限公司

## 主要技术特性 Technical Characteristics:

环境温度范围 Temperature range	-55~+155℃	
<b>电气性能 Electrical Characteristics</b>		
特征阻抗 Characteristic impedance	50Ω	
工作电压 Working voltage	335V max(有效值)	
频率范围 Frequency range	0~6GHz	
介质耐压 Dielectric withstanding voltage	海平面 at sea level: 750V(volts RMS)	
接触电阻 Contact resistance	内导体 center contact	≤10.0mΩ
	外导体 Outer contact	≤5.0mΩ
绝缘电阻 Insulation resistance	≥1000MΩ	
电压驻波比 VSWR	直式 straight	≤1.20
	弯式 right - angle	
<b>材料与涂覆 Mechanical Characteristics</b>		
壳体和其它金属零件 Body or other metallic parts	黄铜镀金 Brass, gold plated	
插针 Male center contacts:	黄铜镀金 Brass, gold plated	
插孔 Female center contacts:	铍青铜镀金 Beryllium copper, gold plated	
绝缘体 Insulators:	聚四氟乙烯 PTFE	
压接套 Crimp ferrules:	铜合金镀镍或镀金 Copper alloy, nickel or gold plated	
密封件 Sealing washer	硅橡胶 Silicone rubber	
连接器机械耐久性 Connector durability	500 次 Cycles	

## MMCX Series

### 界面尺寸 Interface Mating Dimensions

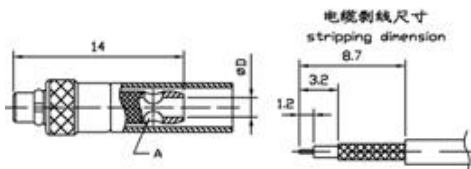


	PLUG (mm)	
	MIN	MAX
A	0.38	0.42
B	-	2.4
C	1.45	-
D	2.7	

	JACK (mm)	
	MIN	MAX
A	2.41	-
B	2.84	2.9
C	3	3.04
D	2.6	-

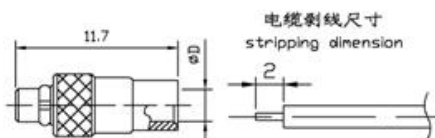
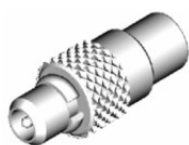
## MMCX Series

### 电 缆 连 接 器 Connectors for Cables



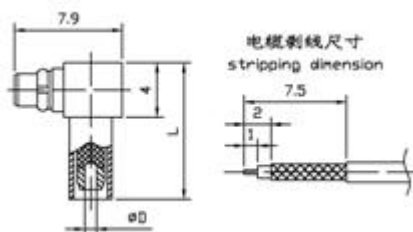
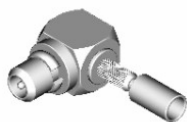
产品型号	电缆型号	D	备注
MMCX-J2	SFF-50-1	0.9	A 处打 $\phi 1.5$ 焊线孔
MMCX-J3	SFF-50-1.5-1 RG316/U	1.6	A 处无焊线孔

MMCX-J2



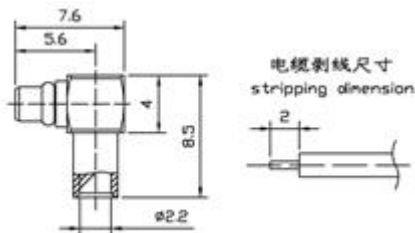
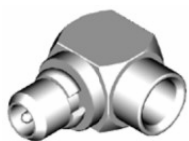
产品型号	电缆型号	D	备注
MMCX-JB2	SFT-50-2-1 RG405/U FCCA VG FCCA VG1	2.2	
MMCX-JB3	SFT-50-3-1	3.6	

MMCX-JB2



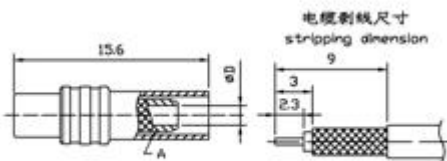
产品型号	电缆型号	D	L	备注
MMCX-JW2	SFF-50-1 RG178	0.9	10.0	压接尾上打 $\phi 1.5$ 焊线孔
MMCX-JW3	SFF-50-1.5-1 RG316/U	1.6	12.0	

MMCX-JW2



产品型号	电缆型号	备注
MMCX-JWB2	SFF-50-1.5-1 RG405/U	

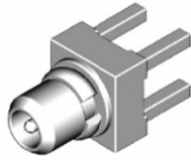
MMCX-JWB2



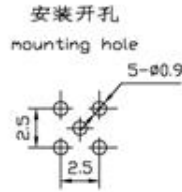
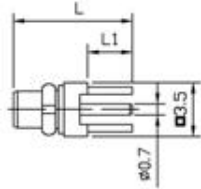
产品型号	电缆型号	D	备注
MMCX-K2	SFF-50-1 RG178	0.9	压接尾中部打 $\phi 1.5$ 焊线孔
MMCX-K3	SFF-50-1.5-1 RG316/U	1.6	

MMCX-K2

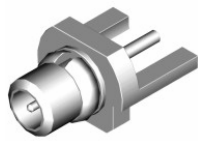
印制板安装连接器  
Connectors for PC Board Mounting



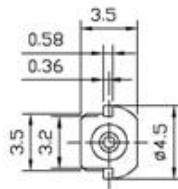
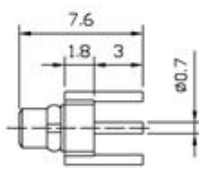
MMCX-JHD



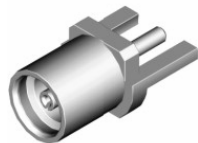
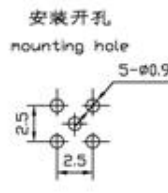
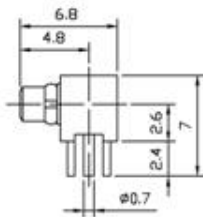
产品型号	备注	
	L	L1
MMCX-JHD	7.7	2.9
MMCX-JHD1	8.7	3.9



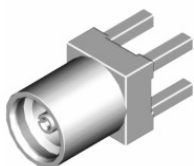
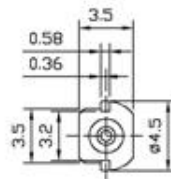
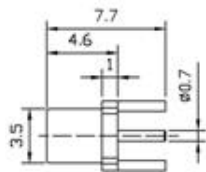
MMCX-JHD2



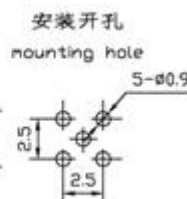
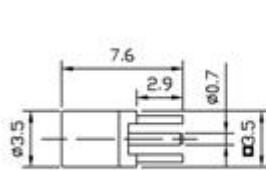
MMCX-JWHD



MMCX-KHD1

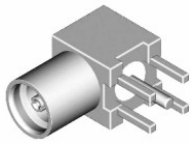
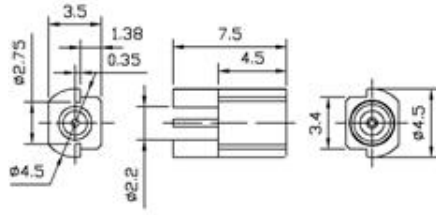


MMCX-KHD2





MMCX-JH-PCB



MMCX-KWHD

