

## K Series

K 系列连接器是在 SMA 基础上发展起来的精密毫米波连接器，可与 SMA 系列连接器对接互换，接口界面采用空气界面，具有使用频率高、体积小、接触可靠等特点。

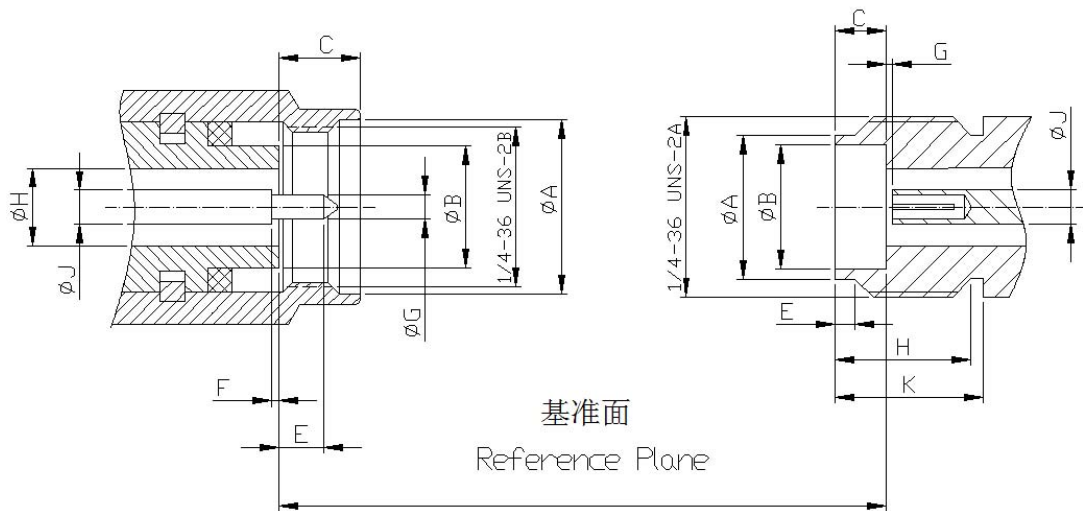
Series K RF. Coaxial connectors are one kind of precision millimeter-wave connectors developed from SMA. They adopt air interface. They have the advantages of small, light, high frequency and superior reliability, etc.



# 金润信电子科技有限公司

主要技术特性 Technical Characteristics:		
环境温度范围 Temperature range	-65~+105°C	
<b>电气性能 Electrical Characteristics</b>		
特征阻抗 Characteristic impedance	50Ω	
工作电压 Working voltage	250V max(有效值)	
频率范围 Frequency range	0~40GHz	
介质耐压 Dielectric withstanding voltage	海平面 at sea level: 1000V(volts RMS)	
接触电阻 Contact resistance	内导体 center contact	≤4.0mΩ
	外导体 Outer contact	≤2.0mΩ
绝缘电阻 Insulation resistance	≥3000MΩ	
电压驻波比 VSWR	≤1.05	
<b>材料与涂覆 Mechanical Characteristics</b>		
壳体和其他金属零件 Body or other metallic parts	黄铜镀金或镀镍 Brass, gold or nickel plated 不锈钢, 钝化或镀金 stainless, steel passivity or gold plated	
插针 Male center contacts:	黄铜镀金 Brass, gold plated	
插孔 Female center contacts:	铍青铜镀金 Beryllium copper, gold plated	
绝缘体 Insulators:	聚四氟乙烯 PTFE	
密封件 Sealing washer	硅橡胶 Silicone rubber	
连接器机械耐久性 Connector durability	500 次 Cycles	

### 界面尺寸 Interface Mating Dimensions



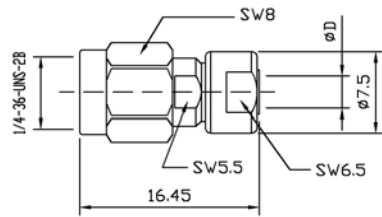
	PLUG (mm)	
	MIN	MAX
A	6.35	
B	4.52	4.57
C		3.43
E	1.02	1.12
F	0.00	0.075
G	0.89	0.94
H	2.895	2.945
J	1.26	1.28

	JACK (mm)	
	MIN	MAX
A	5.24	5.43
B	4.60	4.64
C	1.88	1.98
E	1.00	
G	0.00	0.075
H	4.32	-
J	1.26	1.28
K	5.54	-

## K (SMA2.9) Series



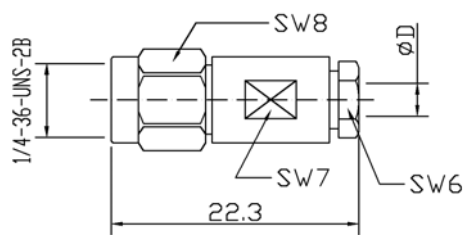
K-J2



产品型号	电缆型号	A	
K-J2	RG174	2.25	
K-J3	RG58	3.66	



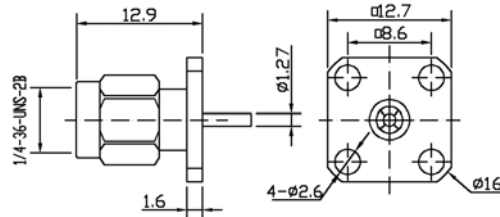
K-JB2



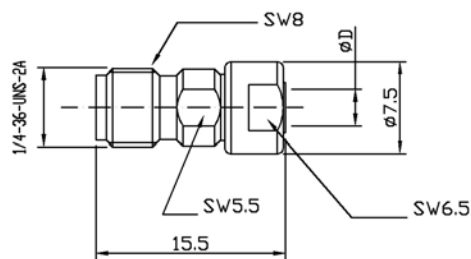
产品型号	电缆型号	D	
K-JB2	SFT-50-2-1	2.2	
K-JB3	SFT-50-3-1	3.6	



K-JFD



K-K2



产品型号	电缆型号	D	备注
K-K2	RG174	2.25	
K-K3	RG58	3.66	



K-KFD

