

FME(SAP) Series

FME(SAP) 用于移动天线系统及其它通讯领域，作为信号传输连接射频同轴电缆之用，具有准确的 50 Ω 特性阻抗、最小的衰减及低成本特点。

FME(SAP) connectors are used for mobile antenna applications. These products distinguish themselves by an exact 50 ohm characteristic, minimum attenuation, correct pass accuracy and low cost.

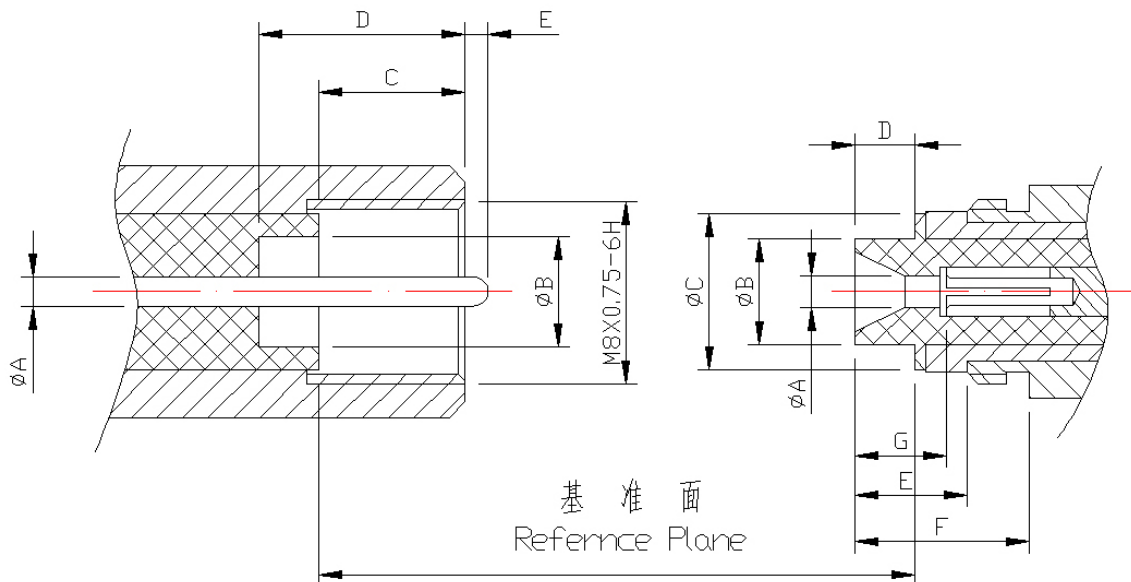


金润信电子科技有限公司

主要技术特性 Technical Characteristics:		
环境温度范围 Temperature range	-65~+155℃	
电气性能 Electrical Characteristics		
特征阻抗 Characteristic impedance	50Ω	
工作电压 Working voltage	250V max(有效值)	
频率范围 Frequency range	0~3GHz	
介质耐压 Dielectric withstanding voltage	海平面 at sea level: 500V(volts RMS)	
接触电阻 Contact resistance	内导体 center contact	≤10mΩ
	外导体 Outer contact	≤5mΩ
绝缘电阻 Insulation resistance	≥5000MΩ	
电压驻波比 VSWR	≤1.20 (Straight) ≤1.25 (Right angle)	
材料与涂覆 Mechanical Characteristics		
壳体和其他金属零件 Body or other metallic parts	黄铜镀金 Brass, gold plated 不锈钢, 钝化或镀金 stainless, steel passivity or gold plated	
插针 Male center contacts:	黄铜镀金 Brass, gold plated	
插孔 Female center contacts:	铍青铜镀金 Beryllium copper, gold plated	
绝缘体 Insulators:	聚四氟乙烯 PTFE	
密封件 Sealing washer	硅橡胶 Silicone rubber	
连接器机械耐久性 Connector durability	500 次 Cycles	

FME (SAP) Series

界面尺寸 Interface Mating Dimensions

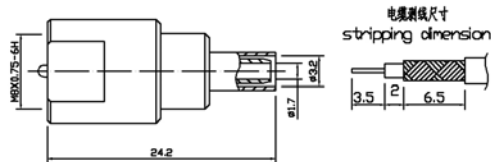


	PLUG (mm)	
	MIN	MAX
A	1.25	
B	4.70	
C	6.40	
D	9.00	
E	0.00	1.00

	JACK (mm)	
	MIN	MAX
A		1.35
B		4.60
C		6.80
D		2.60
E	4.90-	
F	7.60	
G	4.00	5.00

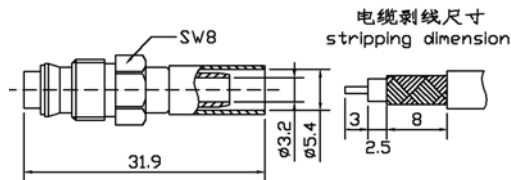
FME (SAP) Series

电 缆 连 接 器 Connectors for Cables



产品型号	电缆型号	备注
FME-J3Y	K-LMR-100	

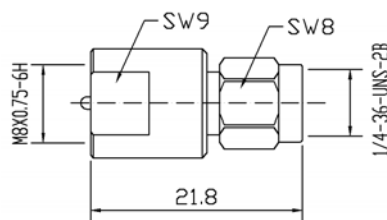
FME-J3Y



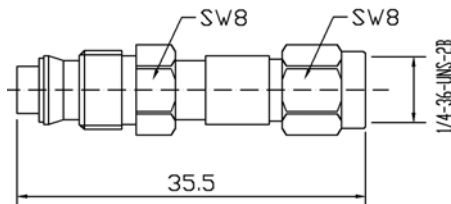
产品型号	电缆型号	备注
FME-K5Y	RG58/U	

FME-K5Y

转 接 器 Adapters



FME/SMA-JJ



FME/SMA-KJ